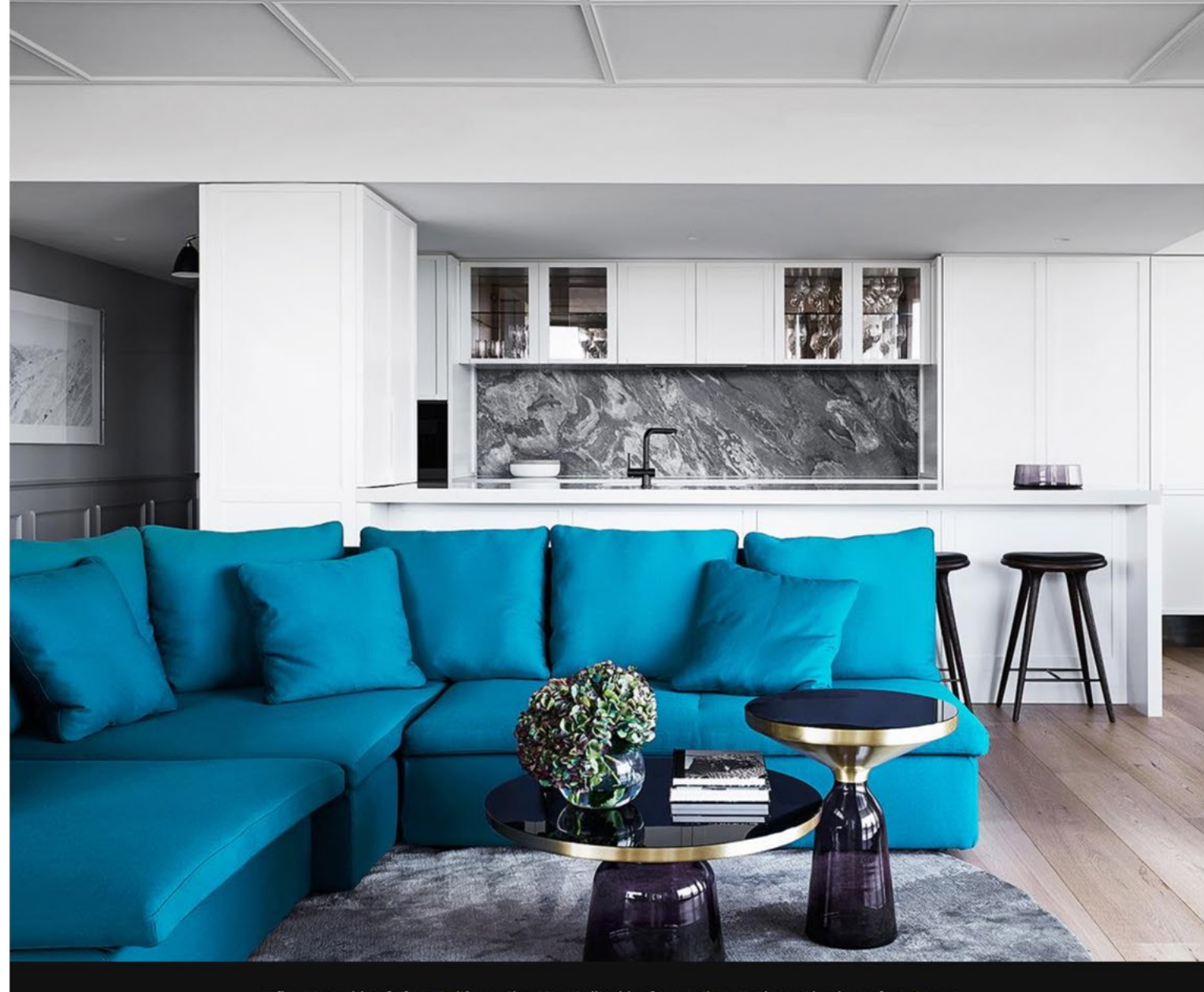


Luxe apartment tour: 'LA glamour' inspires this Melbourne penthouse



Black and white is a central theme in this opulent apartment with a timeless aesthetic.



Arflex 'Mangold' sofa from Poliform. ClassiCon 'Bell' tables from Anibou. 'Ptolomeo' bookcase from Space.

Studio Tate designed this penthouse apartment to evoke 'LA glamour', a sophisticated concept using form and feature materials to reveal understated luxury with a classic Hollywood vibe.



Custom-made dining table by Studio Tate. 'Kai #42' chairs from Great Dane Furniture. Artwork by Michael Mark. Vessels by John Pawson from When Objects Work.

WHAT WERE THE CHALLENGES OF THE PROJECT?

To create a larger area to cater for a growing extended family, we reconfigured the zone between the dining room and main bedroom to give extra amenity and storage. A custom table now seats 10 in the dining area. We also looked to maximise the exceptional views.



Cassina 'Utrecht' chairs from Cult. Artworks by Dena Kahan.

HOW WOULD YOU DESCRIBE THE COMPLETED INTERIOR?

Opulent with a timeless aesthetic. Picking up on the owners' love of black and white, we made this a central theme, such as the chevron marble tile with black stone border in the main ensuite.



'Golden' chair by Nika Zupanc for Moooi from Space. 'Pepe Marble' tabletop mirror by StudioPepe

WHAT ARE SOME OF YOUR FAVOURITE DESIGN ELEMENTS?

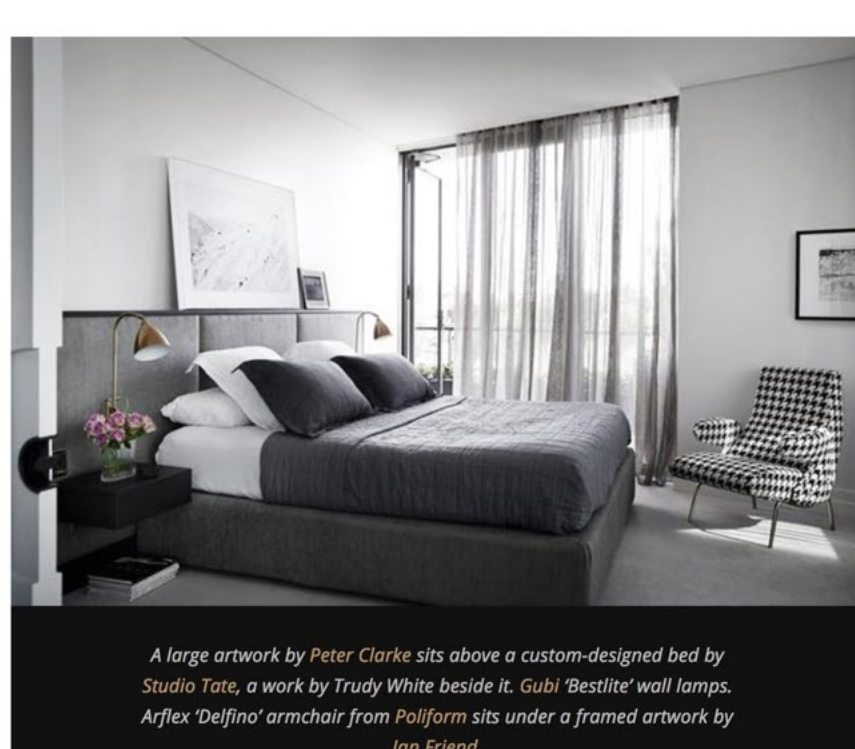
The bespoke American oak table inlaid with pink-veined green marble with a brass trim and 'socks' on the table legs.



Mater stools from Cult. 'Rock' table from Hub. 'Triangle' light by Douglas & Bec.

HOW DO THE OWNERS USE THE SPACE?

The penthouse is their city home during the working week. They love the story that evolved as we developed key details to reference the LA glamour theme that are woven throughout the interiors – green stone, brass and a considered selection of soft and bold colours – pink, deep green and bright blue – set against a black and white backdrop.



A large artwork by Peter Clarke sits above a custom-designed bed by Studio Tate, a work by Trudy White beside it. Gubi 'Bestlite' wall lamps. Arflex 'Delfino' armchair from Poliform sits under a framed artwork by Ian Friend.