

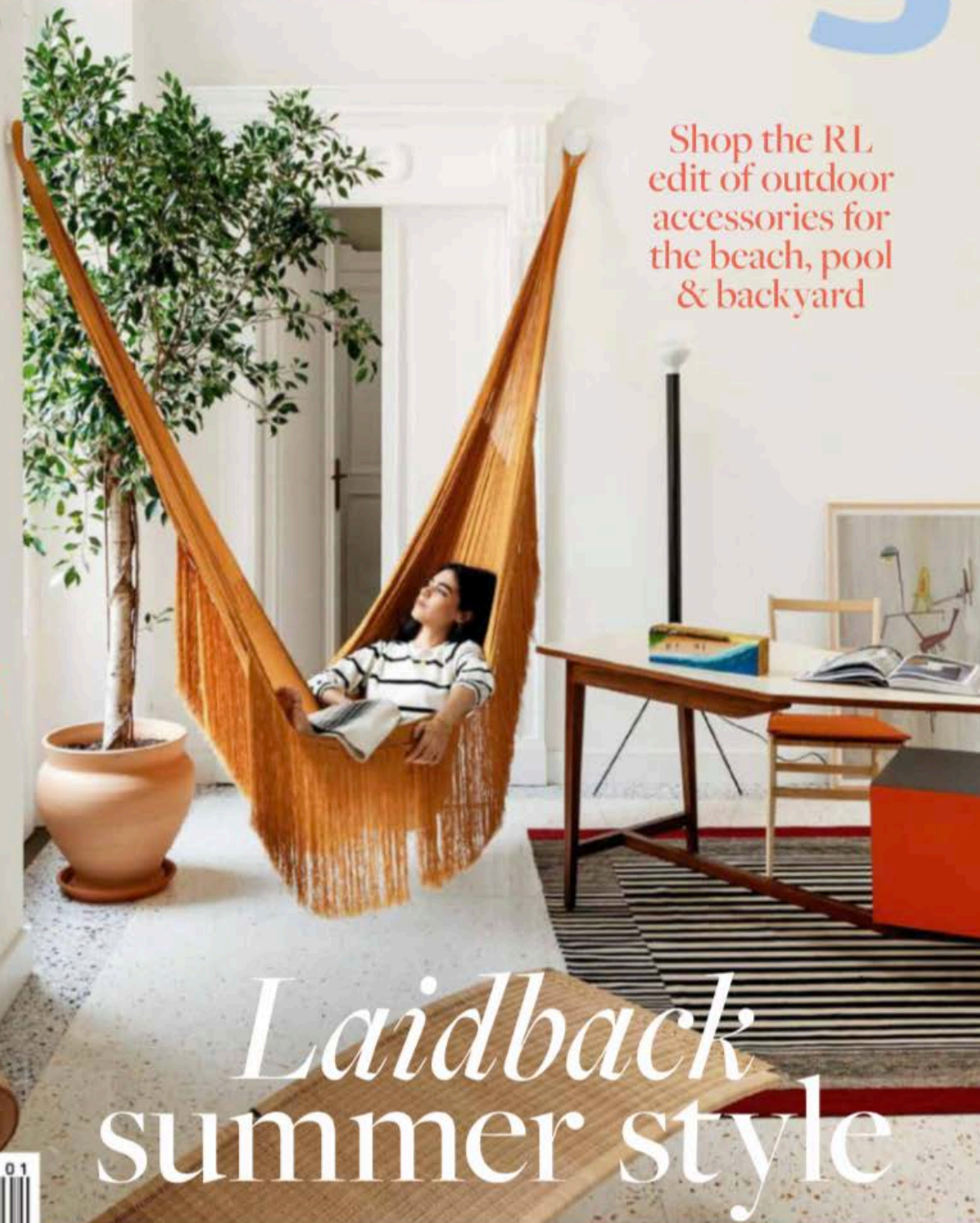
How to make a small home feel bigger P114

realiving

TREND REPORT
The *latest* in carpet, stone, timber & tile flooring

LIGHT & SHADE
Your guide to Euro-style awnings and shutters

Shop the RL edit of outdoor accessories for the beach, pool & backyard



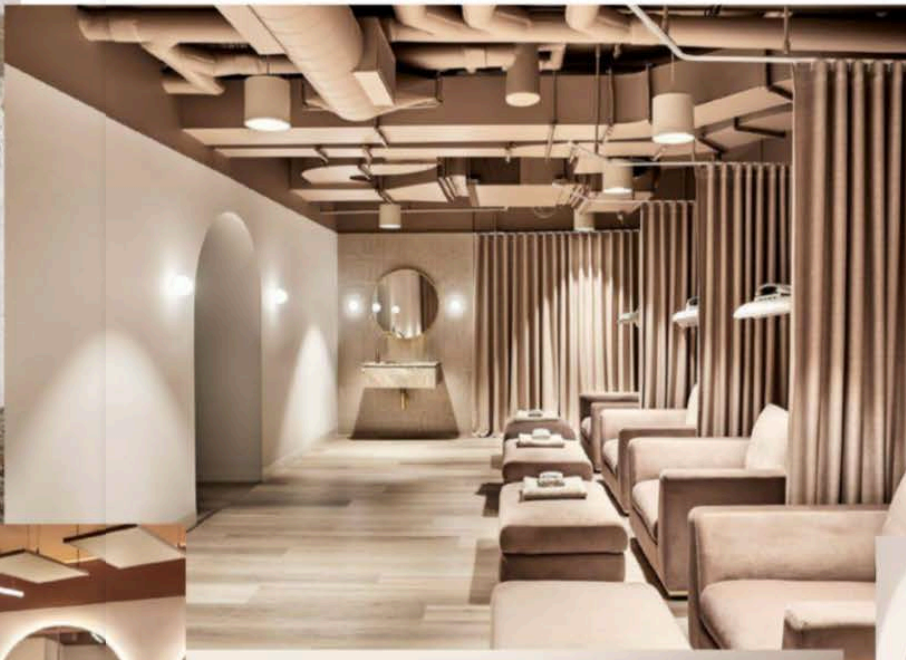
Laidback summer style

9 313006 008453 01

 JANUARY \$8.00

148 PAGES OF CHIC & CHEERFUL INTERIORS

CLOCKWISE FROM LEFT **Curve appeal** "Colour, texture and form merge to create the visual identity," Alex says of the softly curved walls and gentle lighting. **Line work** Floating shelves in stone and 2Pac surface in Dulux's Limed White half-strength add to the uninterrupted visual harmony, while providing display opportunities. **Rising above** "The ceiling hats are a point of interest for clients in the yoga studio," Alex says. "We used feature colours in the yoga studio and LED lounge on the ceiling – these were Dulux Terracotta Chip and Magnitude." **Subtle polish** In the treatment rooms, elevated details include the above-vanity basin from Acqua Bathrooms and Zip HydroTap in brass.

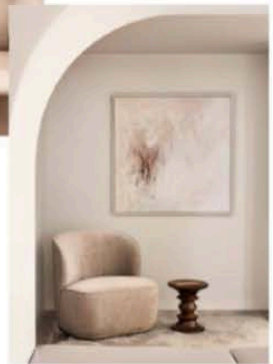
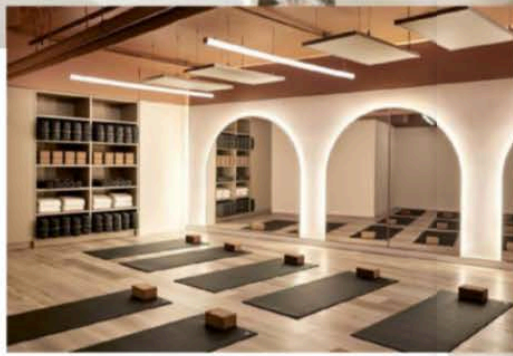


shop it



1 Manduka cork **yoga block**, \$39.99, Upward Dog. **2** Middle of Nowhere 'Bjorn' **mirror** in Brass (1m), \$469, Life Interiors. **3** Eames 'Time Life' **stool** in Walnut, \$2000, Living Edge. **4** Gaiam cork **yoga mat**, about \$139, Absolute-Snow.

HOLISM RETREAT
CHADSTONE, VIC
space
crush
Layered with colour, texture and light, this day spa takes guests on a wellness journey



THE PROCESS OF TRANSFORMATION was the inspiration for the design of Studio Tate's Holism Retreat, an holistic spa immersed within the MGallery by Sofitel Hotel in Melbourne. "We sought to design a destination day spa and urban sanctuary that seamlessly integrated with its high-end hotel customers and fashion neighbours in Chadstone," says Alex Hopkins, the director and principal designer of interior architecture at Studio Tate. "The process of polishing metal or stone resembles the treatment, beginning with a rough textured surface and moving to a polished and refined finish. We referenced this through our material, colour and furniture selections." Together with construction specialist Cobild, Studio Tate designed a reception area, nine treatment rooms, an LED light therapy lounge, yoga studio and consultation suite. Shades of blush and clay roll across rendered walls and arched thresholds, showcasing curved architecture chosen for its softening effect. Ambient lighting and timber flooring lend warmth, velvet and leather furnishings add to the luxury experience, and the wellness journey starts at the front desk. Alex says: "Sculptural pink granite forms the large rounded reception joinery, with feature joinery behind the reception desk. The textural difference between the mosaic tiles and the smooth polished stone to the reception desk solidified our design inspiration".



words: Laura Barry | photography: Ellis Thompson
interior design: studio tate
"conversion correct at time of print"

CLOCKWISE FROM TOP **Light show** "We focused on low lighting to create a calm and ambient environment," says Alex. Mini Glo-Ball wall lights from Living Edge. **Tonal bliss** A Gubi 'Stay' lounge chair, Eames walnut stool and Cressida Beale *Pink Series 9.7* artwork inspire relaxation. **Wonder wall** A backlit Bjorn mirror sets the mood in a treatment room. **First impressions** The Corsi and Nicolai 'Florida' honed and hammered granite desktops are paired with Artedonus mosaic tile bases.

