



night fever⁶

hospitality design

FRAME



openuu p.238
openuu.com
hello@openuu.com

OpenUU is an award-winning interdisciplinary design studio founded in 2011. The firm is headed by design duo Caroline Chou and Kevin Lim, each bringing their international background, unique design aesthetics and vision to approach the work with playful pragmatism. Armed with first-hand kitchen experience as Le Cordon Bleu chefs, the firm focuses expertise in the hospitality and retail industry.



park associati p.418
parkassociati.com
info@parkassociati.com

Listening, intuition and experimentation are trademarks of the design culture of Park Associati. Founded in Milan in 2000 by Filippo Pagliani and Michele Rossi, the architectural practice currently has a team of 45, focusing on office buildings, retrofitting and retail spaces across a wide scope of interventions ranging from urban planning to interior design. Park Associati's projects are characterised by an on-going exploration of the different forms and functionalities of materials, as well as an utmost attention to detail.



prototyp& p.434
prototypesp.com.br
contato@prototypesp.com.br

Prototyp& is a Sao Paulo-based design studio founded in 2014 by architect, designer and art director Felipe Protti. Working with the concept of a factory floor, the firm forges a design path that converges with architecture, interiors, furniture, product, set and graphic design. The practice's headquarters functions as an open showroom with a workshop where project prototypes are developed with small suppliers through dynamic, handmade processes.



simon vorhammer p.198
simonvorhammer.de
info@simonvorhammer.de

Simon Vorhammer is a computational designer working in the field of architecture and product design. Pursuing a holistic approach from concept to fabrication, he specialises in digital tools such as parametric modelling and digital fabrication.



spacemen p.218
spacemen-studio.com
explore@spacemen-studio.com

Founded in early 2014 by Edward Tan, Shanghai-based studio Spacemen is a design firm that specialises in building brand architecture. Its architecture and interior design seizes primary brand strategies and ideologies and transforms them into unique spatial experiences that tell stories. The studio uses emerging technologies to transform static physical spaces into dramatic environments.



studio knack p.198
studio-knack.de
post@studio-knack.de

Studio Knack was founded in Munich by Julian Dostmann, Simon Frick and Andreas Müller in 2013. The team is now 12-strong, comprising architects, interior architects and 3D designers with a wide-range of expertise. The firm brings a unique identity and emotion to every project, ensuring that its solutions are aesthetic, exacting in design, sophisticated in craftsmanship, and structured around the demands placed on them.



quarta & armando p.164
qaadr.com
info@qaadr.com

Quarta & Armando (Q&A) is a design and research office based in Shanghai and Turin. Working across different disciplines and rooted in the metropolitan space, Q&A's mission is finding original answers to significant questions by means of architectural design. In line with its trans-disciplinary approach, the studio experience ranges from commercial and residential interior design to temporary architecture, events, branding and graphic design.



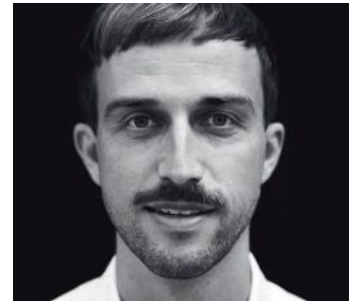
rabih geha architects p.110, 116
rabihgeha.com
rga@rabihgeha.com

Led by Rabih Geha, who founded the practice in 2006, the award-winning practice Rabih Geha Architects works on a portfolio of projects that includes architecture, interiors, product design and experimental installations. The practice works alongside its clients to weave together the story of their identity and the building they inhabit. Each project retains an individual identity based on the stories it has to tell.



raphael navot p.212
raphaelnavot.com
info@raphaelnavot.com

Born in Jerusalem, Raphael Navot graduated from The Design Academy Eindhoven in the Netherlands. An independent, multidisciplinary non-industrial designer, he lives and works in Paris, focusing on custom-made design and made-to-measure interiors which combine traditional methods with contemporary savoir-faire.



studio komo p.392
studiokomo.de
hello@studiokomo.de

Founded in 2012 by Moritz Köhler, Studio Komo is a boutique agency for interior design based in Stuttgart. Comprising a team of six people, the studio works on projects in the fields of hospitality, fair design, office and retail. Studio Komo creates holistic design from interiors to brand building and visual appearance using a personal approach to create a unique identity for each client.



studio modijefsky p.032
studiomodijefsky.com
mail@studiomodijefsky.nl

Studio Modijefsky is an interior architecture studio founded by Esther Stam in 2009. Its home in the centre of Amsterdam hosts an international team of architects and interior designers who provide a total creative service in projects ranging from hotels to boutiques and bars to spas. The ten women that currently form the studio carefully design everything that is experienced by a venue's guest for the duration of their stay, whether it's 5 seconds or 5 hours.



studio richard lindvall p.194
richardlindvall.com
info@richardlindvall.com

Stockholm-based interior design company Studio Richard Lindvall was founded in 2007 by Richard Lindvall, who has 'a passion for everything creative'. Predominantly engaged in making total concepts for interior design, he often incorporates custom furniture into his projects. His work also includes hospitality projects, as well as publications, graphic design and photography.



roar p.268, 324
designbyroar.com
contact@pallavidean.com

Roar – formerly known as Pallavi Dean Interiors – is an award-winning boutique interior design studio based in Dubai. As well as hospitality and commercial projects, the firm's portfolio covers residential, education and health-care. Design director Pallavi Dean launched the studio in 2013 after a decade working with big international firms. Roar's mantra is 'creating experiences through design', a reminder that the experience of the people using a space must drive every design decision.



schemata architects p.014
schemata.jp
info@tag.schemata.jp

Jo Nagasaka established Schemata Architects immediately after graduating from Tokyo University of the Arts in 1998. Since 2007, the studio has been based in Tokyo from where an ever-expanding expertise covers a wide range of projects from furniture design to architecture in Japan and around the world. Nagasaka's design approach is always based on a 1:1 scale, regardless of the size of the work at hand.



sid lee architecture p.038, 362
sidleearchitecture.com
jpelland@sidleearchitecture.com

Sid Lee Architecture is an affiliate of the Sid Lee creative agency, with 600 globally active professionals based in the company's Montreal, Toronto, Paris and Los Angeles offices. Founded in 2009 through the acquisition of the Nomade architectural firm, Sid Lee Architecture is led by architects and senior partners Jean Pelland and Martin Leblanc. The firm offers a wide range of services, from urban analysis and development strategy, to multi-unit residential projects, corporate office design and retail.



studio riebenbauer p.186
riebenbauer.net
gutentag@riebenbauer.net

Studio Riebenbauer is a design firm based in Vienna. Founded by Franz Riebenbauer in 2003, the core team includes eight people. The studio creates deep brand experiences by breaking boundaries, strongly believing that this way of thinking creates memorable and unique brands. As a one-stop-shop, Studio Riebenbauer is able to express all aspects of a brand, from classic communication and branded spaces, to branded architecture and art installations.



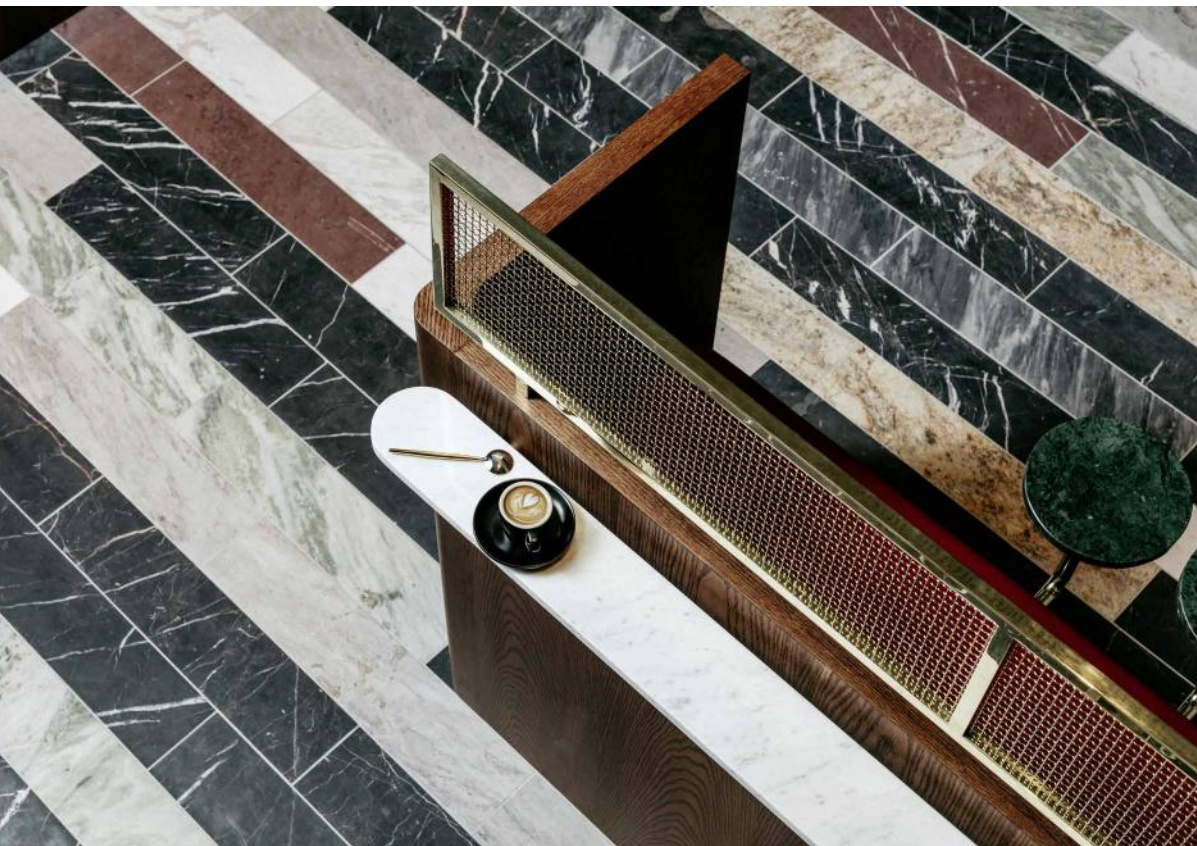
studio tate p.288
studiotate.com.au
info@studiotate.com.au

Studio Tate is a Melbourne-based interior architecture practice committed to intelligent design. From bespoke and multi residential, to hospitality, retail and workplace projects, the firm's dynamic approach is grounded in curiosity. Led by principal interior designer Alex Hopkins and business partner Carley Nicholls, the studio consistently delivers beautifully-resolved solution-based outcomes that inspire.



studio unltd p.130
studiounltd.com
info@studiounltd.com

Founded in 2009 by Greg Bleier, Los Angeles-based Studio Unltd is an award-winning design firm equally adept at the varied disciplines of interior architecture, furniture and lighting. The small and agile team of nine people focuses in hospitality projects, specializing in restaurant design. Its success is driven by the ability to transform client vision, brand and functionality into thoughtfully crafted reality.



left Dark wooden elements and brass kick rail hark back to the design features of a traditional bank building.

right page Individual tables, topped with green and white marble, complement the colour palette of the floor covering.

next spread Banquette seating, split into small booths, are upholstered in velvet with leather cushions in dusty pink tones to bring out the greens and browns in the marble surfaces and flooring.

felix forrest

toby's estate

studio tate's design narrative draws inspiration from a historic bank and treasury

sydney – On the ground floor of the new Commonwealth Bank office building, Studio Tate has developed a luxury station for well-known coffee shop Toby's Estate, in collaboration with the building's architects Woods Bagot. The high-profile location came with the constraining gravitas of the host building's decorative marble floor and a lavishly-high ceiling. The design was built around 'the historic idea of a treasury and its restrained, opulent aesthetic'. The Richmond-based firm has used rich tones and warm metallic finishes to complement the pre-existing materials.

The café space is discreet, with only a small collection of seats, divided into options of high bars, lounge seating and upholstered booths. The furnishings are classical in style, selected in tones of dark green marble, muted pink velvet and walnut timber veneer. A row of undulating timber batons is displayed at high level, above the black marble wall cladding. 'The vintage sensibility is found in details such as the bullnose benchtops, replete with brass kick rails, or high bars with integrated lighting, reminiscent of bankers' desks,' says Studio Tate. 'Upholstered banquettes have small stone ledges to the rear – not for writing cheques, but resting a cup of coffee.'



